



Data Sheet

Building Management Systems • 207-370-6517 • www.powerwisesystems.com

Gas Meter Specifications:

This meter was designed to monitor gas. The Gas Meter is designed for use with the eMonitor Gateway and the PowerWise inDAC (Data Acquisition Controller).

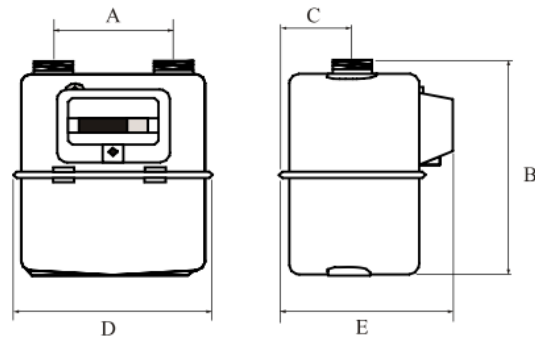


Hardware Specifications

Operating Environment:

Temperature: -20°C to 50°C

Exterior Dimensions:



Meter Case Material	A in	B in	C in	D in	E in	Wt lb	Connection Threads
Aluminum	4.3	9.1	2.8	8.1	6.7	4.0	¼" NPT

Sensor Specifications

Use:	Natural gas and LPG
Cyclic volume:	0.42ft ³
Maximum operating pressure:	7.25 PSI
Measuring range:	Qmin 1.4 ft ³ /h Qmax 211ft ³ /h
Pulse transmitter:	LF-system, 12 Vdc max 10mA max, standard 1 ft ³ /pulse